

## V3043 (HSV10)

### Description

### 描述

A solenoid-operated, 4-way, 3-position, direct-acting, spool-type, tandem center, screw-in hydraulic cartridge valve. When de-energized, the V3043-47A blocks cylinder ports, while allowing flow from 3 to 1. When coil S1 is energized, flow is allowed from 3 to 2, and from 4 to 1. When coil S2 is energized, flow is allowed from 3 to 4 and from 2 to 1. In circuits where work port flows are unequal due to cylinder ratios, the higher return flow should be directed to port 2. While 1 may be fully pressurized, it is not intended for use as the valve's inlet.

電磁驅動、3 位 4 通、直動閥芯式、串聯中位、液壓螺紋插裝閥。斷電時，V3043-47A 截止油缸油口，而允許油液從 ③ 流向 ①。線圈 1 通電時，油液可以從 ③ 流向 ②，以及從 ④ 流向 ①。線圈 2 通電時，允許油液從 ③ 流向 ④，以及從 ② 流向 ①。在由於油缸面積比而造成工作油口流量不均衡的油路中，較大流量的回油應導入油口 ②。雖然可以對油口 ① 完全加壓，但其不用作閥的。

A solenoid-operated, 4-way, 3-position, direct-acting, spool-type, closed center, screw-in hydraulic cartridge valve. When de-energized, the V3043-47C blocks flow to all ports. When coil #1 is energized, flow is allowed from 3 to 4, and from 2 to 1. When coil #2 is energized, flow is allowed from 3 to 2, and from 4 to 1. In circuits where work port flows are unequal due to cylinder ratios, the higher return flow should be directed to port 2. While 1 may be fully pressurized, it is not intended for use as the valve's inlet.

電磁驅動、3 位 4 通、直動閥芯式、中位閉合、液壓螺紋插裝閥。斷電時，V3043-47C 截止油液流向任何油口。線圈 1 通電時，允許油液從 ③ 流向 ④，以及從 ② 流向 ①。線圈 2 通電時，油液可以從 ③ 流向 ②，以及從 ④ 流向 ①。在由於油缸面積比而造成工作油口流量不均衡的油路中，較大流量的回油應導入油口 ②。雖然可以對油口 ① 完全加壓，但其不用作閥的進油口。

A solenoid-operated, 4-way, 3-position, direct-acting, spool-type, motor spool, screw-in hydraulic cartridge valve. When de-energized, the V3043-47D blocks the inlet port while allowing flow from 2 and 4 to 1, and from 4 to 1. When coil #1 is energized, flow is allowed from 3 to 4, and from 2 to 1. When coil #2 is energized, flow is allowed from 3 to 2, and from 4 to 1. In circuits where work port flows are unequal due to cylinder ratios, the higher return flow should be directed to port 2. While 1 may be fully pressurized, it is not intended for use as the valve's inlet.

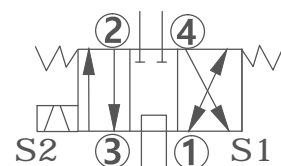
電磁驅動、3 位 4 通、直動閥芯式、馬達閥芯、液壓螺紋插裝閥。斷電時，V3043-47D 阻止油液流向 ③，而允許油液從 ② 流向 ①，或從 ④ 流向 ①。線圈 1 通電時，允許油液從 ③ 流向 ④，以及從 ② 流向 ①。線圈 2 通電時，油液可以從 ③ 流向 ②，以及從 ④ 流向 ①。在由於油缸面積比而造成工作油口流量不均衡的油路中，較大流量的回油應導入油口 ②。雖然可以對油口 ① 完全加壓，但其不用作閥的進油口。

## CARTRIDGE SOLENOID CHECK VALVE 插入式電磁止回閥

## V3043 (HSV10)

### Graphic Symbol

## 繪圖符號



### Ordering Code

## 型號說明

V3043 1 @ 2 # 3 \* 4 D24 5 DG 6 25 7

1

## Cartridge solenoid check valve 插入式電磁止回閥

V3043(10W-4)      四口三位      Poppet 4-way

2

## Operation

### 油路方向功能選項



3

**Option:  
with filter**  
附濾網裝置選項

S: With Filter  
有濾網

<b>P:Push-style Manual Override</b>	<b>N:Option</b>
P: 推 (向外推移式)	N: 標準(輔助裝置不可調)
<b>M:Screw-out Konb Style</b>	<b>Screw-in Konb Style</b>
M:旋鈕式(開) 逆時鐘方向 ↶	旋鈕式(開) 順時鐘方向 ↷
<b>T:Push and Twist Style</b>	<b>Manual Override</b>
T:推桿附扭轉	固定轉助裝置

5

Coil type  
線圈型式

D12: DC12V      D24: DC24V      A24: AC24V      A11: AC110V  
A22: AC220V      A38:AC380V      RA1:RAC220V      RA2:RAC220V

6

## Terminations 接線方式

DG: DIN43650 插頭式      DL: Lead wires(2) 出線2條式

7

Max pressure  
最高壓力

25: 250bar(3500psi)

## Technical Data

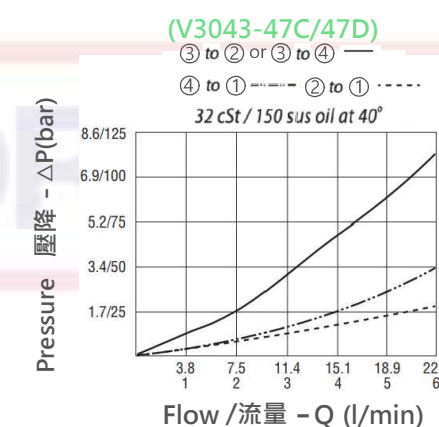
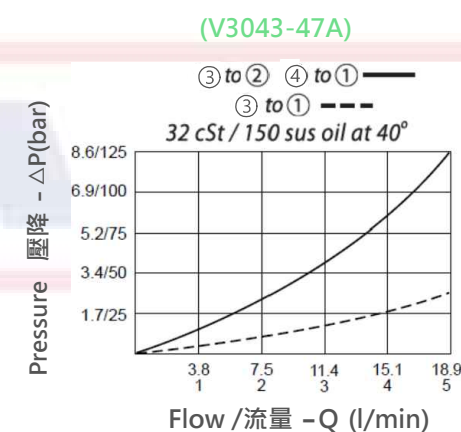
### 技術參數

Max.Operating Pressure 最高壓力	Rated Flow 額定流量	Cavity-Tooling 成型孔	Installation Torque 安裝扭矩	Weight 重量
bar(psi)	(l /min)		(Nm)	(kg)
250(3500)	19(47A) 23(47C/47D)	10W-4	44-56	0.73

Fluids- Temperatures 使用油溫範圍	Internal Leakage 最大內漏量	Filtration 過濾精度	Minimun Voltage Required 綠圈需要的最低電壓
(°C)	80cc/minute	(um)	
-40~120°C	80cc/minute at 210bar	25	90% of nominal 額定電壓的90%

## Specifications

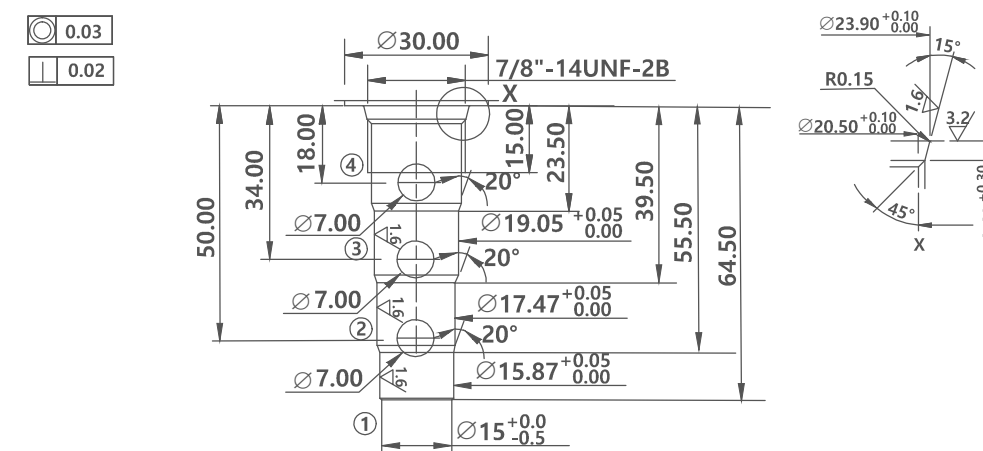
## 技術數據



## Cavity-Tooling

成型孔

Millimeters (m/m)



# CARTRIDGE SOLENOID CHECK VALVE

插入式電磁止回閥

V3043 (HSV10)

## Dimension

## 外型尺寸圖

Millimeters/(inch)

